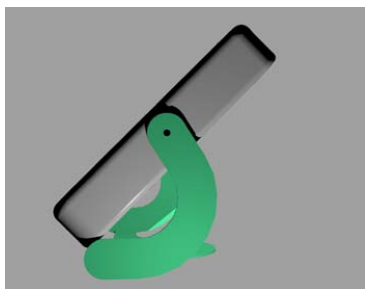
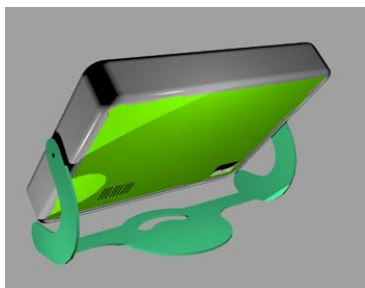
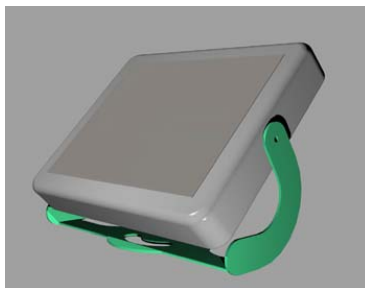
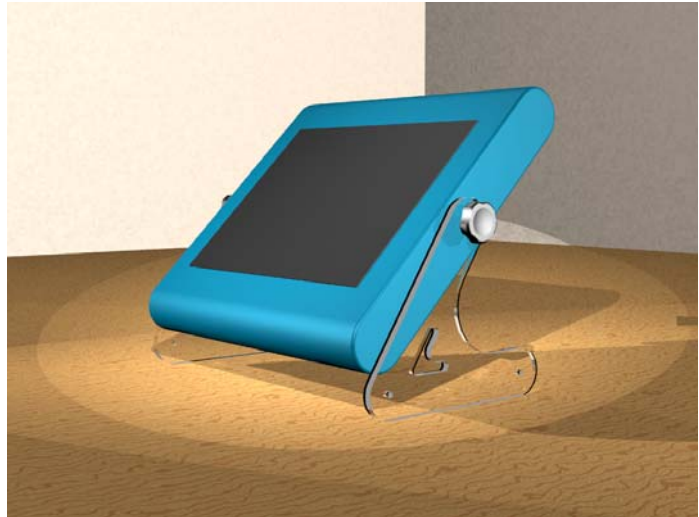


Swing

Swing è la soluzione ideale per chi non vuole rinunciare all'estetica e alla funzionalità nel ambito tecnologico.

Con caratteristiche uniche, come le sue dimensioni ridotte e la potenza di calcolo, si propone sia come sostituto di un classico personal computer (con windows XP), sia come terminale RDP e Citrix (grazie al sistema operativo dedicato basato su linux).



TECHNICAL SPECIFICATIONS

- LCD Monitor 12" Color TFT, 800 x 600, 300 ccd, touch screen
- SBC Compact Flash Socket with chipset VT8606 (66/100/133 FSB) / VT82C686B
- Memory and CPU VIA Eden series (400/533/667 MMz) / Ezra 800 MHz mobile EBGA integrated processor (100/133 MHz FSB); System memory SDRAM SODIMM x1, Max. 512 MB
- System BIOS Award 2MB Flash BIOS
- Standard I/O
 - Serial port x 1: COM 1 with D-SUB 9
 - IDE (UDMA) x 1: support 1 hd IDE 2,5"
 - PS/2 Combo x 1 Keyboard
 - PS/2 Combo x 1 mouse
 - USB x 1
 - VGA connector D-SUB 9
- Video Functions
 - Graphic Accelerator 2D/3D embedded, 4X AGP
 - Direct TTL LCD control
 - Shared integrated video systems up to 32Mb
 - Max Resolution for chipset video VIA VT8606, CRT :1920X1440 a 16M colors.
- LCD Panel: 800 x 600 a 64k colors
- Audio Functions
 - Chipset VIA VT82C686B with AC97 2.0 compliant audio codec VT1612
 - Converter sample rate full duplex e independent for audio recording & playback
 - Support per Microsoft DirectSound
 - Audio 3D
 - Hi-performance, mixed-signal, stereo
- Ethernet
 - 100/10 Base-T Ethernet con RJ-45
- Optional peripheral
 - Custom Keyboard
 - Wireless lan
- Hardware Monitor
 - Monitoring of 5VSB, VBAT, 1.5V, 3.3V, +5V, +12V, -12V and Cpu voltage
 - Power AT power (100-240 Vac)
 - Operating temperature 32 to 140 F (0 to 60 C)

Per maggiori informazioni consulta www.apricotidea.com